

How To Read Your Meter

Where To Look On The Meter

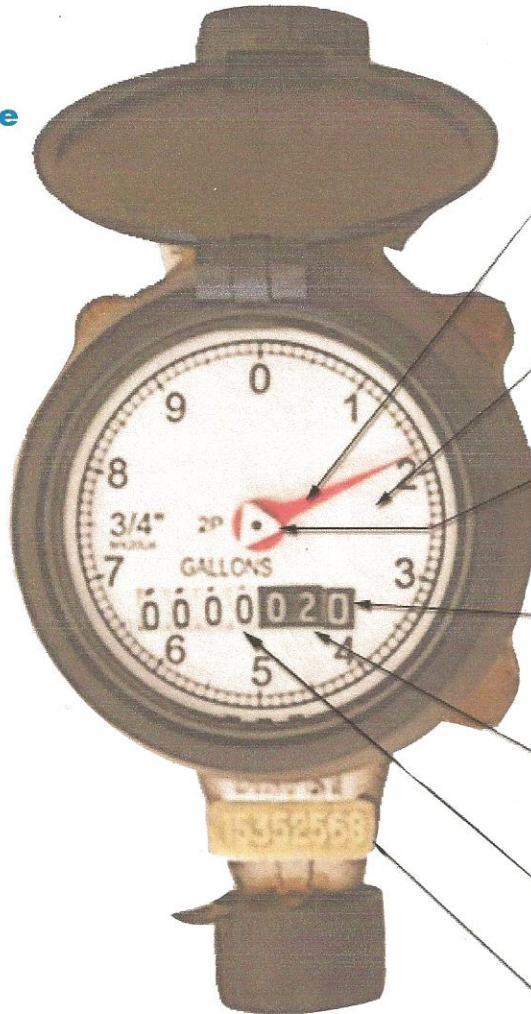
- Locate the white numbers on the right side of the meter dial (black background). Turns of numbers in the black area register that hundreds of gallons of water have passed through the meter.
- Locate the black numbers on the left side of the meter dial (white background). Turns of numbers in the white area register indicates that 1000 gallons of water have passed through the meter.
- The meter dial is read like an automobile odometer, straight from left to right.

See how easy it is to read...

Determining Your Water Usage

Use the following example to help read your meter.

- Select a day to take an initial water meter reading.
- Write down the numbers you see on the meter odometer. Example: 0076400
- After a period of time has passed (a day or week, for example), read your meter again at approximately the same time of day. Example: 0083300
- Subtract your first reading from the second. This is your water usage for the period. Example: $0083300 - 0076400 = 6900$
- The 6900 figure indicates that 6900 gallons of water have been used during the time period between the two readings. The average residential customer uses about 7,000 gallons per month.



Flow Indicator

Used when measuring very low flow through the meter. The flow indicator measures in U.S. Gallons.

Meter Dial

Leak Detector (triangle)

If no water is being used inside or outside, this indicator should not be moving. If it is rotating, you may have a leak.

Place Holder

Indicated by [0].

Meter Register

Every turn of a number in the first black register measures 10 gallons; the second, 100 gallons.

Every turn of a number in the white register measures 1000 gallons.

Meter Number